



# GAT MONTHLY MEMBERSHIP PROGRESS REPORT

Results as of: 3/31/2022

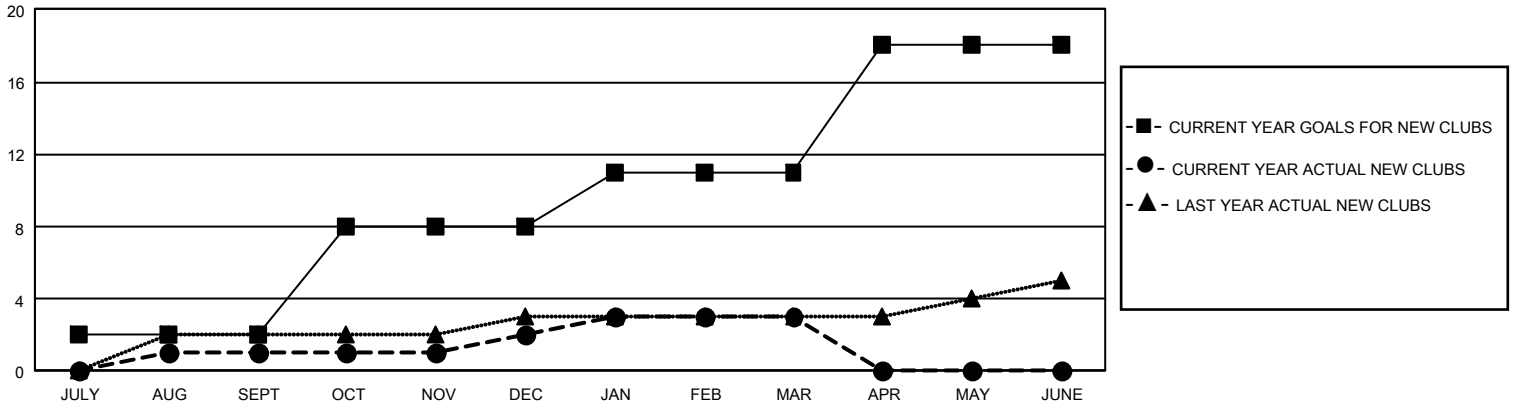
## GMT Constitutional Area 1, Group N

REPORT DOES NOT INCLUDE CLUBS IN UNDISTRICTED AREAS.

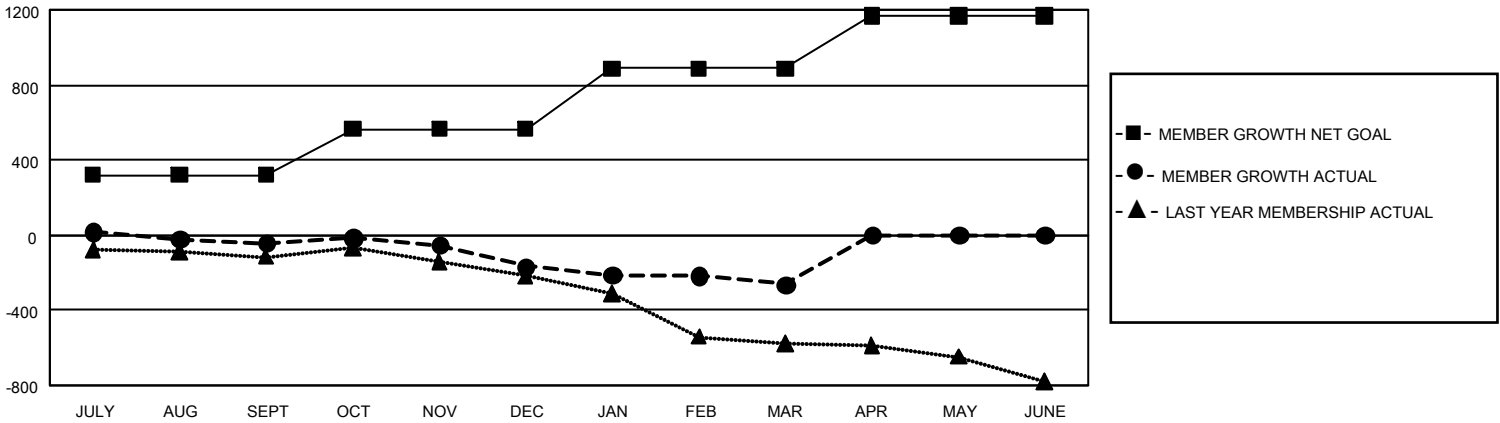
Clubs			
RESULTS FOR 2021-2022			
QUARTER	NEW CLUB GOAL	NEW CLUBS	DROPPED CLUBS
JULY/AUG/SEPT	6	1	7
OCT/NOV/DEC	18	1	4
JAN/FEB/MAR	9	1	2
APR/MAY/JUNE	21	0	0

Members			
RESULTS FOR 2021-2022			
QUARTER	MEMBER GROWTH NET GOAL	MEMBER GROWTH ACTUAL	DROPPED MEMBERS ACTUAL (including transfers)
JULY/AUG/SEPT	319	441	455
OCT/NOV/DEC	247	341	441
JAN/FEB/MAR	320	350	404
APR/MAY/JUNE	282	0	0

GOALS AND ACTUAL NEW CLUBS CUMULATIVE



GOALS AND ACTUAL MEMBERS CUMULATIVE



<b>DROPPED CLUBS: 13</b>	265 CLUBS OF 559 ADDED 1 OR MORE NEW MEMBERS	<b><u>GENDER DISTRIBUTION</u></b>	
		MALE 7,940 (64.92%) FEMALE 4,290 (35.07%) NON BINARY 0 (0.00%) PREFER NOT TO ANSWER 1 (0.01%)	
<b><u>DROPPED MEMBERS</u></b>		TOTAL FAMILY UNIT MEMBERS 2,349	
DECEASED 185 CLUB CANCELLED 126 OTHER 989 <b>TOTAL 1,300</b>	<a href="#">CLICK HERE FOR CUMULATIVE MEMBERSHIP DATA</a>	FAMILY MEMBERS PAYING HALF DUES 1,203	